

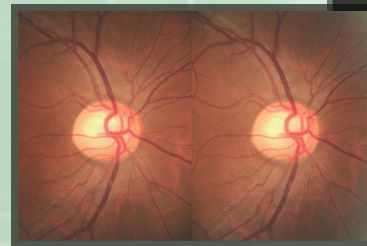
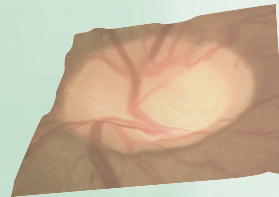


Technology for Life Science

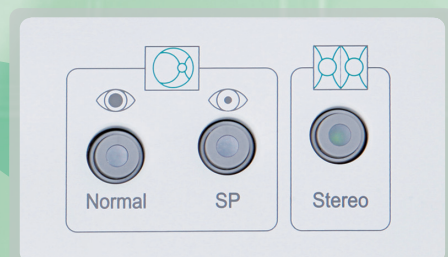
2D/3D Non-mydrriatic Retinal Camera

KOWA

*nonmyd* <sup>3D</sup>  
RETINAL CAMERA



*A new concept retinal camera with "SSP", Simultaneous Stereoscopic Photography.*



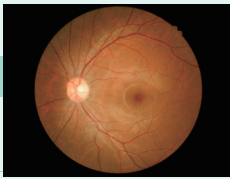
Three photography modes to select from: Normal, SP(Small Pupil), and Stereo.



Technology for Life Science

## 2D – Normal –

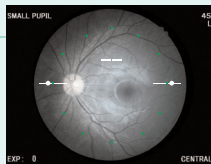
**Normal** Field angle : 45°



Kowa's exclusive optical design in combination with the digital SLR camera delivers extremely detailed retinal images. The integrated 9-points internal fixation light system allows for mosaic photography.

## 2D – SP –

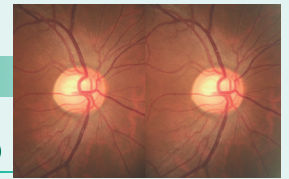
**SP (Small Pupil)** Field angle : 45°



Retinal images can be taken even with smaller pupils. On screen guides indicate if the pupil size is within the sufficient range (above  $\phi 3.5$  mm) for photography.

## 3D – Stereo –

**Stereo** Field angle : 34°(20°×27°)



### Photography

Instant and simultaneous 3D photography is possible in 1-shot. Stereoscopic images are captured without the camera shifting.

### Retinal observation on 3D images

The shape of the optic disc and cup can be viewed on a 3D image.

Switch between the parallel and cross viewing methods with 1-click when viewed on a 2D monitor.



Image capturing



Parallel/Cross view icon (Icon may be hidden.)

### Time sequential movie

The chronological change of the shape of the optic disc and cup can be viewed on a moving image.

## Specifications

Photography modes	Normal / SP / Stereo (electrically switched)	Camera	Specific Nikon digital SLR camera
Stereoscopic photography method	Simultaneous stereo photography	Monitor	5.7 inch LCD
Stereo photography parallax	7.4"(at the 0 diopter eye)	Internal fixation light	Central, Disc, Macula, mosaic 8 positions
Field angle	Normal : 45°	External fixation light	Red light (option)
	SP : 45°		
Working distance	30 mm	Optical head base adjustment range	Forward/Backward : 40 mm
			Leftward/Rightward : 98 mm
Minimum pupil size	Normal mode : $\phi 4.0$ mm SP mode : $\phi 3.5$ mm Stereo mode : $\phi 4.0$ mm	Chin rest adjustment range	Vertical (electric) : 27 mm
		Interface	55 mm (electric)
Compensation range of examined eye	Without compensation : -12 D~+13 D Compensation - : -32 D~-10 D Compensation + : +10 D~+35 D	Power supply	Input : AC100~240 V 50 / 60 Hz Power consumption : 150 VA
		Dimensions	310(W)×504(D)×548(H) mm
Focusing	Split luminous bars coincidence	Weight	21 kg / 46 lbs (excluding the attached digital SLR camera)
Working distance adjustment	2 luminous dots indication type		

Images of the monitor are compositions.  
nonmyd is a registered trademark of Kowa Company, Ltd. in the United States, Germany, Japan and other countries.  
Nikon is a trademark of Nikon Corporation.  
Specifications and appearances are subject to change without notice.

Distribution name : KOWA nonmyd WX



### Kowa Company, Ltd.

**World Sales Headquarters**  
4-14, Nihonbashi-honcho 3-chome, Chuo-ku,  
Tokyo 103-8433, Japan  
Phone: +81(3)3279-7639  
Facsimile: +81(3)3279-7541  
URL: <http://www.kowa.co.jp/e-life/>

**Kowa Company, Ltd. Chofu Factory**  
3-1, Chofugaoka 3-chome, Chofu,  
Tokyo 182-0021, Japan

**Kowa Company, Ltd. Hamamatsu Factory**  
3-1, Shinmiyakoda 1-chome, Kita-ku, Hamamatsu,  
Shizuoka 431-2103, Japan

### Kowa American Corporation

**Medical Devices Division**  
20001 South Vermont Avenue,  
Torrance, CA 90502, U.S.A.  
Phone: +1(310)327-1913 Facsimile: +1(310)327-4177  
URL: <http://kowa-usa.com/>

**Kowa Optimed Deutschland GmbH**  
Bendemannstrasse 9,  
40210 Duesseldorf, F.R. Germany  
Phone: +49(211)54218400 Facsimile: +49(211)54218410  
URL: <http://www.kowamedical.com/>

REF K9L57\_1699300MX/K-3  
Printed in Japan.

